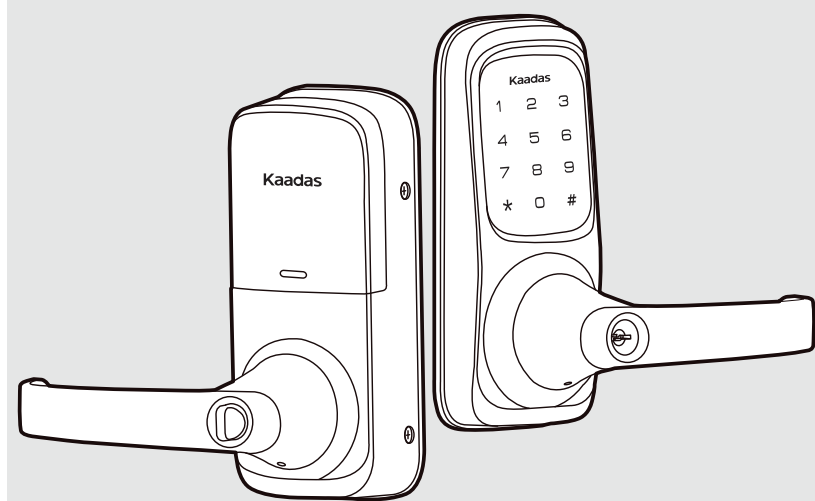


120mm

155mm

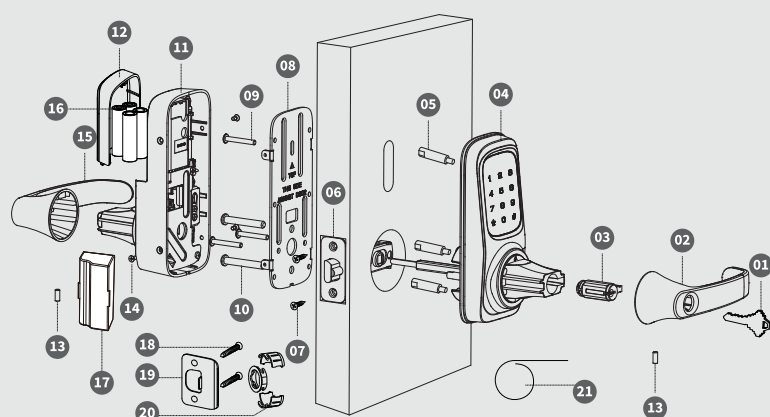
Kaadas



Z-Wave Touchpad Lever
KA214
Installation Guide

正面

Installation Guide



- 01 Backup Keys (2)
- 02 Front Lever
- 03 Key Cylinder
- 04 Exterior Assembly
- 05 Round Nuts (3)
- 06 Latch
- 07 Latch Screws (2)
- 08 Mounting Plate
- 09 Small Mounting Plate Screws (3)
- 10 Big Monuting Plate Screws (2)
- 11 Interior Assembly
- 12 Batter Cover
- 13 Set Screws
- 14 Interior Assembly Screws (4)
- 15 Rear Lever
- 16 AA Alkaline Batteries (4)
- 17 Z-Wave Module (Optional)
- 18 Strike Plate Screws (2)
- 19 Strike Plate
- 20 Drive-In Collar (Optional)
- 21 Reset Tool

Additional Parts
Optional latch faceplate

Tool Needed
(For new door)
1. 2-1/8" (54mm) hole in the front of the door
2. 1" (25.4mm) hole on the side of the door.
3. Chisel & Hammer

Lock Installation
#2 Phillips Screwdriver
Important notice: Make sure your door is prepared prior to installation. Please refer to the provided template for drilling if needed.

Interior Assembly
Battery Cover, Reset Button, Thumb Turn

Exterior Assembly
Touchscreen Keypad, Key Cylinder

We reserve all rights for the interpretation to this instruction.
▲ All design and specification are subject to change without notice.

Preparing for Installation

A. Measure to confirm that the hole in the door is 2-1/8" (54mm).
Manually fasten the three Round Nuts to the interior assembly.

B. Choose strike plate of latch.
Measure to confirm that the hole in the door is 1" (25mm).

- YES: No change necessary.
- NO: If the backset of your door is 2-3/4" (70mm), please adjust the latch.

C. Is the slotted centered in the door hole?
Backset is the distance from the door edge to the center of the hole in the door. The latch is provided with adjustable design which can fit either 2-3/8" (60mm) or 2-3/4" (70mm) backset.

If the backset of your door is 2-3/8" (60mm), no need to adjust the latch.

If the backset of your door is 2-3/4" (70mm), please adjust the latch.

背面

Installation

NOTE: Do not use an electronic screwdriver or drill during installation.

1. Install the latch in the door.

2. Install strike plate on the door frame.
▲ NOTE: Make sure the hole in door frame is drilled a minimum of 1" (25mm) deep.

3. Install the lever on the exterior assembly.
a. According to the direction of the door, choose the lever handle.
b. Press the front lever onto the exterior assembly and tighten the Set Screw.

Installation

4. Hold the exterior assembly flush against the door. Route the cable below the latch. Let the tailpiece and cable go though the door hole.

5. **Optional:**
(A) Route the cable through the hole in the mounting plate.
(B) Secure the mounting plate with the 5 mounting plate screws. Make sure the exterior assembly is vertically aligned.
(C) Tighten securely with a #2 Phillips screwdriver.

6. Connect the power cable and make sure the cable of the exterior assembly is well plugged into the socket of the interior PCB. You would feel a solid click when you push the plug into the socket.

Installation

7. Install interior assembly. (Keep the thumb turn in the horizontal position.)

8. Secure the interior assembly with the interior assembly screws.

9. Press the Rear Lever onto the interior assembly and tighten with the Set Screw.

▲ NOTE: Make sure lock cylinder is in line with lever. Push lever into the base until the catch pin is engaged.

Installation

10. Keep the set screw hole facing the ground.
▲ NOTE: Batteries must not be installed prior to inserting and/or removing the Z-Wave module.)

11. Insert Batteries and Battery Cover.
Insert 4 AA alkaline batteries into the battery pack.
Use the Reset Tool to press and hold the Reset Button for more than 5 seconds until you hear a long "BEEP". Install the Battery Cover.

Change lever handle for right or left handed doors
When you need to reinstall the lock on the door in the other direction, you need to reverse the lever's direction.

1. Remove the Set Screws with a screwdriver.
2. Remove the Front Lever from the exterior assembly. Remove the Rear Lever from the interior assembly.
3. Reinstall the Latch and exterior and interior assembly according to installation procedure.
4. Press the Rear Lever onto the exterior assembly and insert the Set Screws.

Lever handle faces away from latch. Keep the set screw hole facing the ground.

折后尺寸: 120x155mm
工艺: 折页
材质: 90g双胶纸
颜色: 单黑印刷

--- 折线
—— 切割线