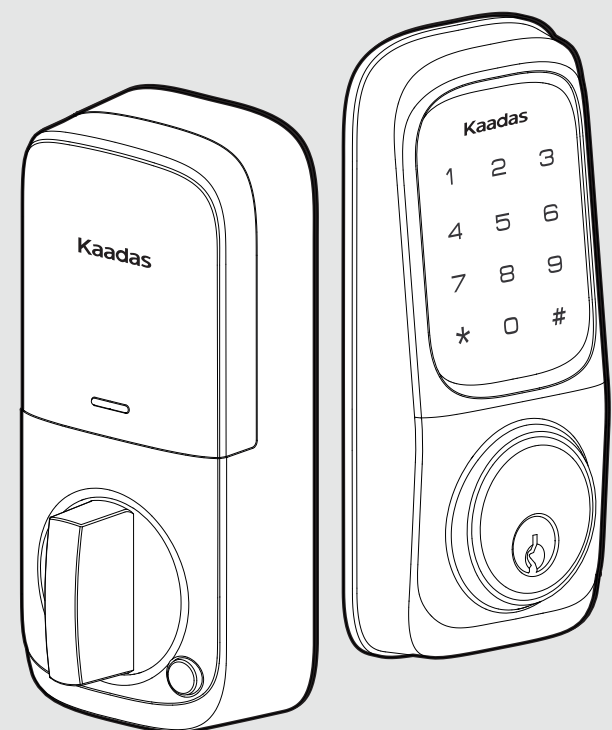


120mm

正面

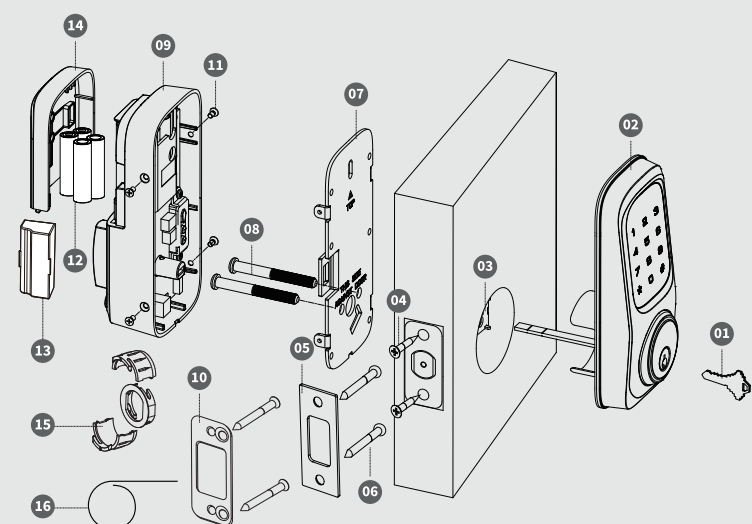
155mm

# Kaadas



## Z-Wave Touchpad Deadbolt KA211 Installation Guide

### Installation Guide



- 01 Backup Keys (2)
- 02 Exterior Assembly
- 03 Latch
- 04 Latch Screws (2)
- 05 Strike Plate
- 06 Strike Plate Screws (4)
- 07 Mounting Plate
- 08 Mounting Plate Screws (2)
- 09 Interior Assembly
- 10 Reinforcement Plate (Optional)
- 11 Interior Assembly Screws (4)
- 12 AA Alkaline Batteries (4)
- 13 Z-Wave Module (Optional)
- 14 Battery Cover
- 15 Drive-In Collar (Optional)
- 16 Reset Tool

#### Additional Parts



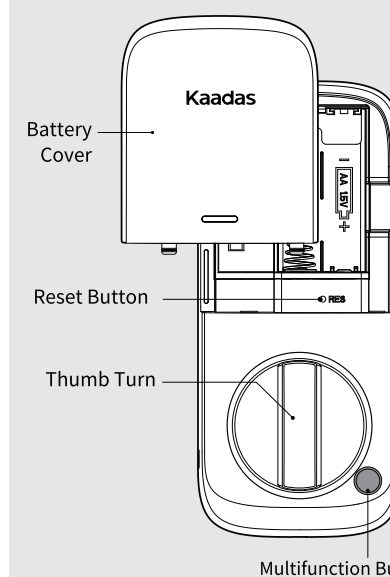
#### Tool Needed

(For new door)  
1. 2-1/8" (54mm) hole saw  
2. 1" (25.4mm) boring bit  
3. Chisel & Hammer

#### Lock Installation

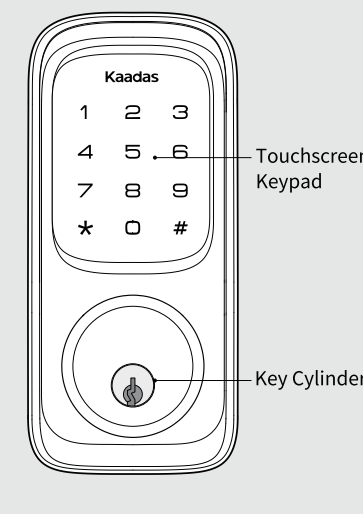
#2 Phillips Screwdriver  
**Important notice:**  
Make sure your door is prepared prior to installation. Please refer to the provided template for drilling if needed.

#### Interior Assembly



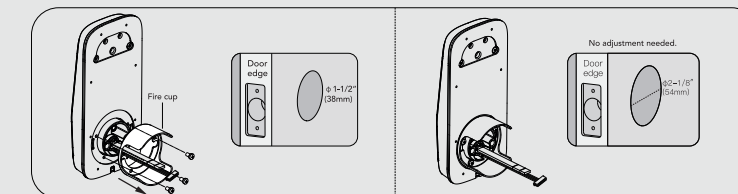
We reserve all rights for the interpretation to this instruction.  
▲ All design and specification are subject to change without notice.

#### Exterior Assembly

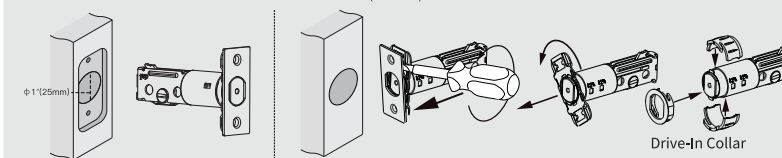


### Preparing for Installation

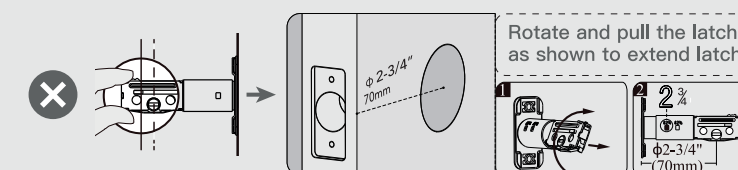
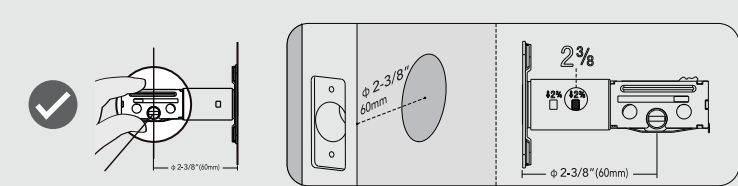
**A. Measure the bore hole.**  
(If the measurement is 1-1/2" (38mm), remove the fire cup.)



**B. Choose strike plate.**  
Measure to confirm that hole in the door is 1" (25mm).



Is the slotted hole centered in the door hole?

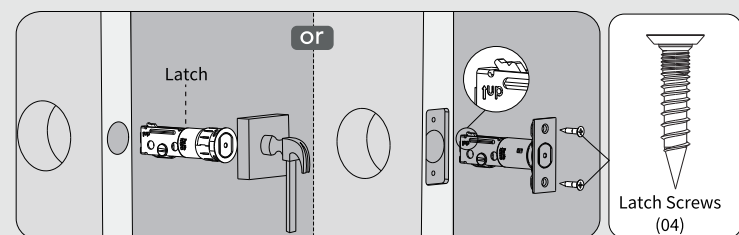


背面

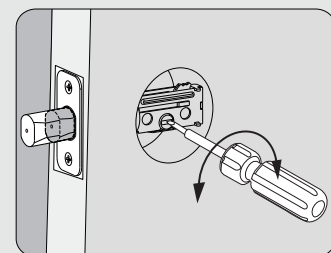
### Installation

**NOTE: Do not use an electronic screwdriver or drill during installation.**

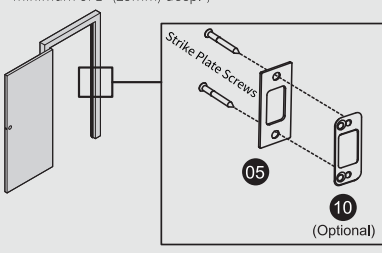
1. Install the latch in the door.



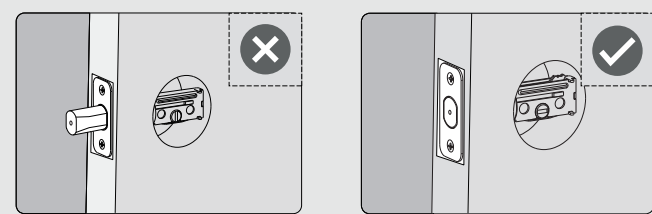
2. Use a screwdriver to confirm that the deadbolt works smoothly.



3. Install strike on the door frame.  
**NOTE:** Make sure the hole in door frame is drilled a minimum of 1" (25mm) deep.

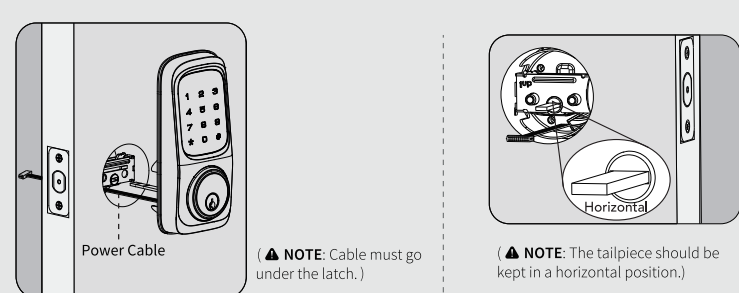


4. Make sure the latch is fully retracted (in the unlocked position).

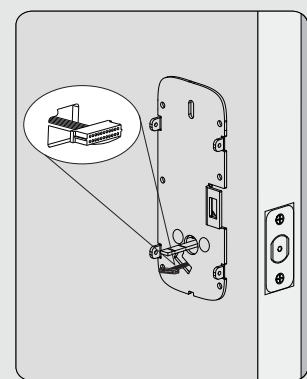


### Installation

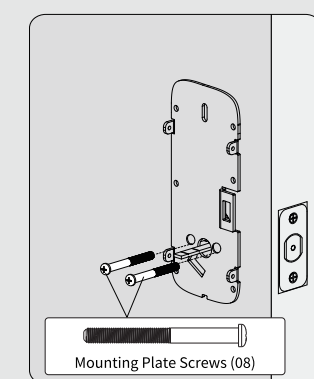
5. Hold the exterior assembly flush against the door. Route the cable below the latch. Let the tailpiece and cable go through the door hole.



6. Route the cable through the hole in the mounting plate.

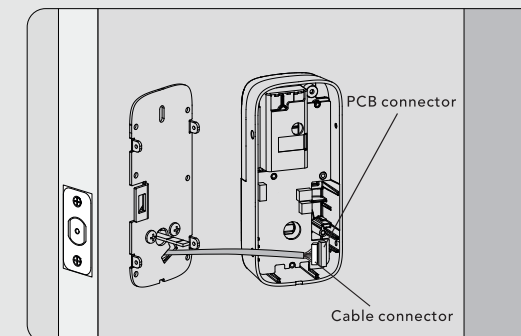


7. Secure the mounting plate with the mounting plate screws. Make sure the exterior assembly is vertically aligned. Tighten securely with a #2 Phillips screwdriver.

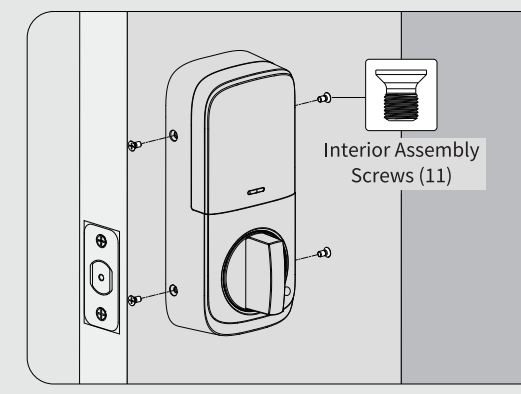


### Installation

8. Connect the cable from the exterior assembly to the socket on the interior assembly. Push the connector in firmly to ensure a proper connection.



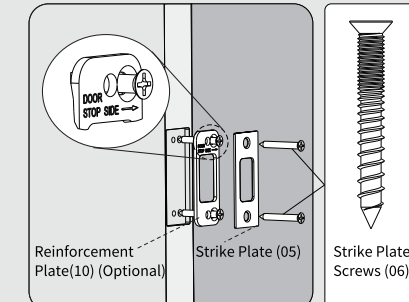
10. Secure the interior assembly with the interior assembly screws.



**NOTE:** Test operation using the backup key and thumb turn before installing batteries, see if the latch works smoothly.

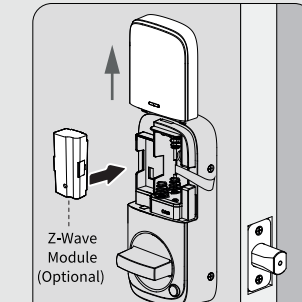
### Installation

11. Install strike plate and reinforcement plate on the door frame.



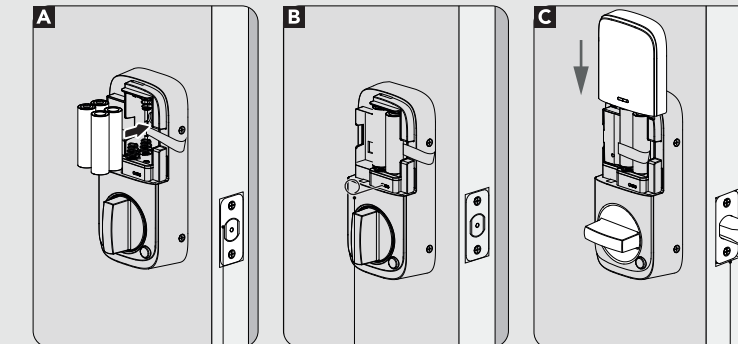
**NOTE:** Make sure the hole in the door frame is drilled a minimum of 1" (25mm) deep.

12. Install the Z-Wave module.



**NOTE:** Batteries must not be installed prior to inserting and/or removing the Z-Wave Module.

13. Insert batteries to calibrate the lock handing process.



**A** With the device unlocked, insert 4 AA alkaline batteries into the battery pack.

**B** Use the Reset Tool to press and hold the Reset Button for more than 5 seconds until you hear a long "BEEP".

**C** If the reset is successful, the latch bolt will extend on its own to learn the handing orientation of the door.

折后尺寸: 120x155mm  
工艺: 折页  
材质: 90g双胶纸  
颜色: 单黑印刷

--- 折线  
—— 切割线